



CONRAD PREBYS  
**AZTEC**  
STUDENT UNION

# BUILDING TOUR



CONRAD PREBYS  
**AZTEC**  
STUDENT UNION

Named after Conrad Prebys who gifted \$20 million to San Diego State University for student scholarships, the **Conrad Prebys Aztec Student Union** serves as the campus living room for student life. Designed as a LEED Platinum building with several energy conservation features. Amenities and services include dining, retail, lounges, meeting rooms, a multi-purpose Montezuma Hall, 300-seat Theatre, outdoor courtyards, bowling and a fitness center. Funding for the \$104 million student union comes entirely from SDSU student-approved fees.

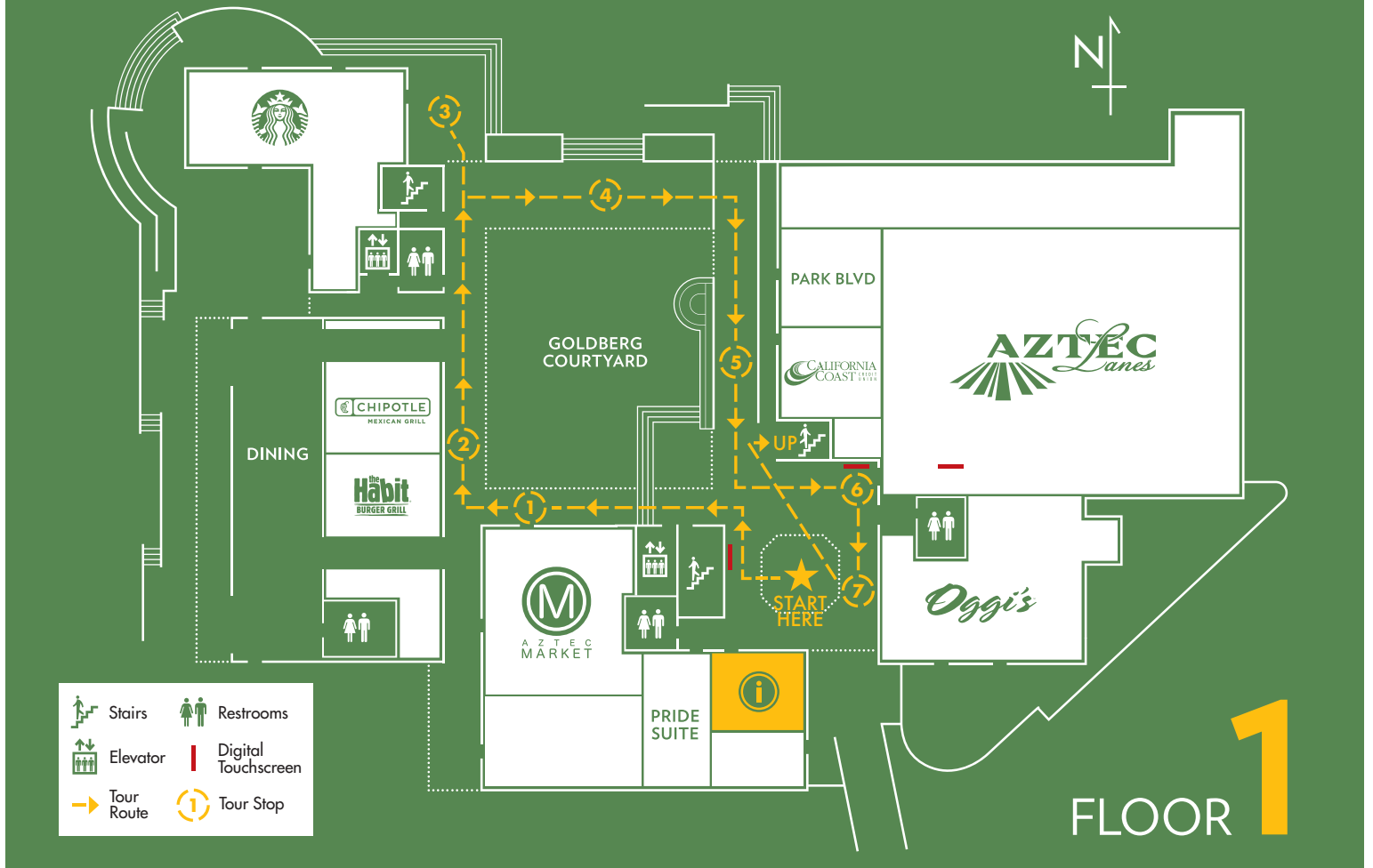


A service of



ASSOCIATED STUDENTS  
SAN DIEGO STATE UNIVERSITY

[as.sdsu.edu/aztecunion](http://as.sdsu.edu/aztecunion)  
[as.sdsu.edu](http://as.sdsu.edu)  
**(619) 594-6551**



**★ START: INFORMATION BOOTH**

**Sustainable Feature – Stormceptor**

- Welcome to the **Union**
- The building is 206,000 gross square feet
- In 2010 students voted for a fee increase to build our Union which is designed to receive LEED Platinum Certification for Building Design and Construction, the highest certification by the US Green Building Council
- The Union is funded entirely by student fees and receives no State funding
- We have 13 meeting spaces, including Montezuma Hall and the Theatre
- Sustainable Elements will be pointed out along the tour

You are standing on one of several decorative inlay areas located on 1st floor. In the center is a drain. Water run-off is filtered through an underground Stormceptor that removes debris and pollutants before it heads into the city storm drain.

**STOP #1: AZTEC MARKET**

The **Aztec Market** is just one of many food service options within the Union managed by Aztec Shops. Offering grab and go meals, a variety of snacks and beverages and **ShakeSmart** protein shakes. Aztec Shops manages all food service on campus as well as the Bookstore and all campus Starbucks.

**STOP #2: CHIPOTLE/THE HABIT/DINING AREA**

**Sustainable Features — Radiant Floor, Natural Ventilation Recycling & Composting**

**Chipotle Mexican Grill and The Habit Burger** are located in the main dining area. This area has indoor and outdoor seating and large glass doors on the west side that open up to provide for natural ventilation.

Our Dining Room has a Radiant Floor that heats and cools the area through the concrete slab where hot or cold water passes through coils and “radiates” through the concrete. The entire west side of all three floors of the Union features Radiant Flooring. Our Radiant Floor installation is currently the largest radiant floor in San Diego County.

**STOP #3: STARBUCKS**

Our **Starbucks** is a popular spot for hanging out, studying or meeting up with friends. You can see it has large glass windows to take advantage of Natural Daylighting and the beautiful campus views.

**STOP #4: LEE & FRANK GOLDBERG COURTYARD**

**Sustainable Feature — Rainwater Collection Tanks**

The **Lee & Frank Goldberg Courtyard** is named after two SDSU alum who made a generous donation for student scholarships. Plenty of seating is available in the courtyard where SDSU students, faculty and staff can enjoy free programs presented by the Aztec Student Union Board (ASUB).

Underneath the courtyard are three 50,000 gallon Rainwater Collection Tanks used for landscape irrigation. Rainwater runs off the roof and into the collection tanks.

**STOP #5: CALIFORNIA COAST CREDIT UNION**

**California Coast Credit Union** offers banking services for the campus and financial seminars for SDSU students. Their sponsorship in naming the “California Coast Credit Union Open Air Theatre” provides much needed support to help renovate the 73-year-old facility.

**STOP #6: AZTEC LANES**

**Sustainable Feature — FSC Wood**

**Aztec Lanes**, our state-of-the-art bowling and games facility, features:

- 12 Brunswick bowling lanes
- 8 big screen TVs
- 5 professional billiards tables
- Gaming lounge
- 2 professional table tennis tables

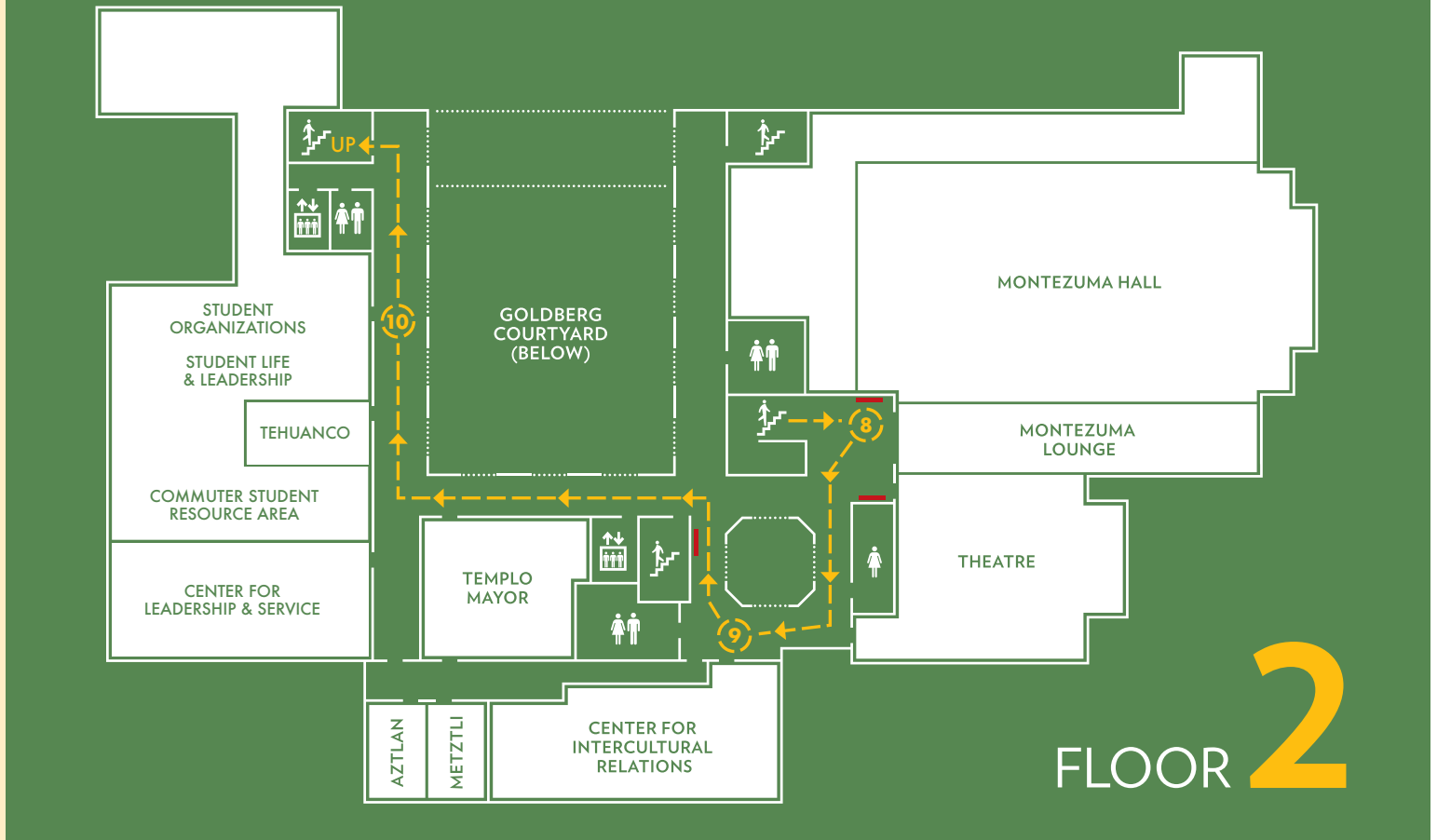
ARC members can enjoy free bowling. Students can take a one-credit ENS (Exercise & Nutritional Sciences) bowling class. Aztec Lanes also offers intramural league bowling.

The wood used in building the Union is FSC certified, including Aztec Lanes. FSC stands for Forest Stewardship Council, which ensures wood products do not come from clear cut forests.

**STOP # 7: OGGI’S PIZZA EXPRESS**

**Oggi’s Pizza Express** is owned by a family who are proud SDSU alumni. Serving pizza, salads, wraps and craft beers and wine in an Aztec sports theme environment with multiple televisions and live entertainment on the outdoor patio.

**PROCEED UP TO 2nd FLOOR**



### STOP 8: MONTEZUMA LOUNGE

**Sustainable Features –**  
**Natural Daylighting**  
**FSC\* Sourced Wood Trusses**  
**Bamboo Flooring\*\***  
**Digital Touchscreen\*\*\***  
**Terrazzo Flooring\*\*\*\***

The lounge is open for SDSU students, faculty and staff. To the left and right of Montezuma Lounge are Montezuma Hall and the Theatre.

**Montezuma Hall** is 11,536 square feet and can seat 1,000 for a lecture and 500 in rounds for dining. The Terrazzo flooring will sustain the lifetime of the building – it will not need to be replaced like carpeting and is also very low maintenance.

Our multi-purpose **Theatre** has 300 fixed tiered seats for movies, lectures and small intimate performances.

\*Forest Stewardship Council – Promotes Responsible Management Of The World's Forests

\*\* Bamboo is a rapid renewable material

\*\*\*Digital Touchscreen — Here is one of seven interactive touchscreens where visitors can access various information including our energy management dashboard. The dashboard is an interactive program that displays sustainable features and building energy use. The building is sub-metered to make occupants aware of real-time energy use and promote conservation.

\*\*\*\*Terrazzo is a composite material consisting of marble, quartz, granite or glass, and poured with a binder. It is cured and then ground and polished to a smooth surface.

### STOP #9: CENTER FOR INTERCULTURAL RELATIONS

Managed by the division of Student Affairs, the **Center for Intercultural Relations** presents programs that promote the appreciation of cultural diversity. The Center includes:

- Multicultural Resource Area
- Women's Resource Area
- Mind, Body & Spirit Area (for reflection and meditation)
- Seminar room
- Staff offices and advising

Stop by or contact them directly for more information about their programs and services.

### STOP #10: STUDENT ORGANIZATIONS & STUDENT LIFE & LEADERSHIP

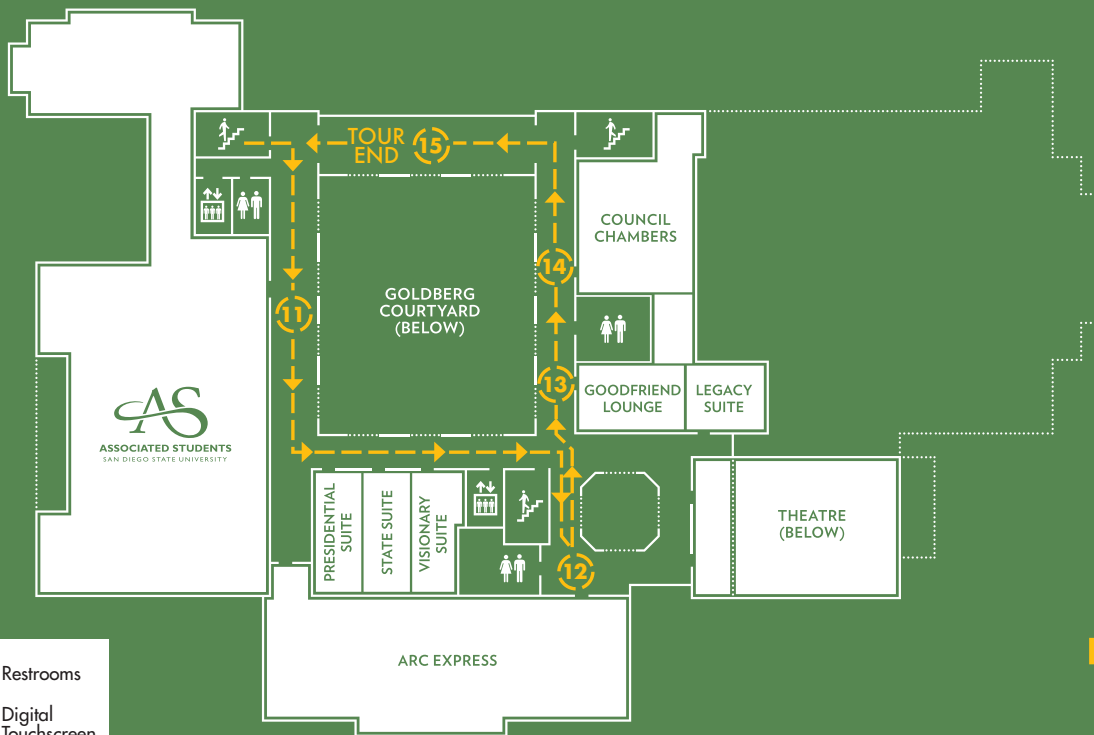
**Sustainable Features –**  
**Radiant Flooring, Operable Windows**

SDSU has over 400 recognized student organizations and we are pleased to offer a "one stop" service through a collaborative partnership with the division of Student Affairs. This area includes:

- 44 offices, workstations and cubicles for student organizations. (13 Offices [2 per office], 29 workstations and 2 cubicles)
- Resource room
- Conference and seminar rooms
- Center for Leadership & Service
- Commuter Student Resource Area
- Staff offices and advising

Stop by or contact them directly for more information about their programs and services.

**PROCEED UP TO 3rd FLOOR**



# FLOOR 3

Stairs    Restrooms  
 Elevator    Digital Touchscreen  
 Tour Route    Tour Stop

## STOP #11: ASSOCIATED STUDENTS

**Sustainable Features –**  
 Natural Daylighting  
 Operable Windows  
 Radiant Flooring

The **Associated Students** offices in the Union include:  
 • Government Affairs    • Business Services  
 • Union Programs & Services  
 - Aztec Student Union Board (ASUB)

Here you can find information about getting involved with Associated Students and all of our programs and services and employment opportunities.

The offices benefit from natural daylighting, radiant flooring and operable windows providing natural ventilation.

## STOP #12: ARC EXPRESS

**Sustainable Features –**  
 Natural Daylighting  
 Operable Windows  
 Daylight Harvesting (Dimming Lights)

ARC members have the benefit of using the **ARC Express**. This 6,000 square foot fitness center features:  
 • Cardio Zone with Cardio Theatre, to watch and listen to TVs using a personal headset  
 • Free weights and weight machines  
 • A balcony to enjoy fresh air with views of College Avenue

## STOP #13: GOODFRIEND LOUNGE AND LACTATION ROOM

The **Goodfriend Lounge** is named in honor of Harvey J. Goodfriend. Harvey was instrumental in

building and operating the former Aztec Center and had a long career with Associated Student and Aztec Shops. The lounge provides comfortable seating for a quiet place to study and relax. Inside the lounge is a private **Lactation Room**. Nursing mothers can register to use the Lactation Room through the Union Programs & Services office with a valid SDSU Red ID.

## STOP #14: COUNCIL CHAMBERS

**Sustainable Feature –**  
 Natural Daylighting

The Associated Students Board of Directors meets in this state-of-the-art conference room. It was designed to host **“paperless meetings”** so our Board of Directors will utilize flat screen monitors and individual tablets to view documents; minimizing the need to reproduce paper documents.

## STOP #15: GREEN ROOF

An area that is not accessible to the general public is our roof. In addition to housing the Union’s mechanical systems, sustainable elements include a **Green Roof** that promotes a natural habitat and a cool roof helps reflect sunlight and heat away from the building and a **93kw Solar Panel Array** that contributes energy savings for the campus.

## END OF THE TOUR

Thank you for your interest in our LEED Platinum Union!

